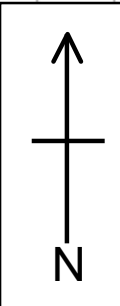


Start - 1st & Court Ave.

Blue "George Washington Carver" Bridge



5 Mile Loop

Follow Dotted Route

(From Start to Trail = .3 Miles)

Water Fountain @ 2.5 Miles

Jackson Ave. Pedestrian Bridge

3

1

Gray's Lake

Gray's Lake Bridge

R&W

Restrooms and Water across from boat docks.

2

4



www.capitalstriders.org

Stone Park Commun